

Kodak 2400DSV-E and 3000DSV-E Digital Scanner-Printers

Specifications

2400DSV-E and 3000DSV-E

Screen Size	2400DSV-E: 303 x 303 mm - 12 x 12 in. / 3000DSV-E: 303 x 440 mm - 12 x 17 in.
Film Formats	Microfiche, jackets, aperture cards, 16 & 35 mm roll film, 16 mm M & ANSI cartridges
Lens Magnifications	2400DSV-E: 7.5x fixed, 9-16x, 13-27x, 23-50x zoom lenses 3000DSV-E: 20-50x zoom lens, 7-7.5x engineering zoom lens
Focus Control	2400DSV-E: Manual / 3000DSV-E: Manual (optional auto-focus kit where available)
Image Rotation	Automatic for printing; motorized for viewing
Scanning Speeds	Up-to 3 seconds @ 200dpi
Scanning Resolutions	200, 300, 400, 600, 800 dpi (restricted image size)
Recommended Daily Volume	2400DSV-E: 300 scans per day / 3000DSV-E: 1000+ scans per day
Electronic Zoom	50-200%
Multiple Prints	2400DSV-E: 1-19 prints / 3000DSV-E: 1-99 prints
Interfaces	Video (direct printing); PC (SCSI II); with optional USB2
Exposure Control	Automatic & manual
Scanning Features	Auto centering, auto frame masking, auto image rotation, auto skew correction, footswitch (optional), grayscale scanning (with POWERFILM only), manual masking & cropping (optional), Image Smoothing (3000DSV-E)
Illumination	20 V, 150 W halogen
Power Requirements	120 V, 50/60 Hz; 230 V, 50/60 Hz; 100 V, 50/60 Hz
Power Consumption	350 W
Dimensions	2400DSV-E: Height: 716 mm, Width: 503 mm, Depth: 821 mm, Weight: 39 kg 3000DSV-E: Height: 853 mm, Width: 560 mm, Depth: 760 mm, Weight: 65 kg

POWERFILM Application Software

Operating System	WINDOWS 2000*, XP Professional and soon VISTA 32 bit
PC Minimum Requirements	Pentium IV, 1GB RAM, 32MB Video RAM, 80GB IDE Hard Drive (all minimum specs)
Supported SCSI Boards	ADAPTEC 2940 or 2930 or 2904 SCSI Controller 2390 or 2490 recommended for grayscale scanning

11x17/Letter/Legal/A3/A4 High-speed video laser printing

Printer Type	Laser electrostatic
Developing System	Micro-toning
Print Resolution	600 dpi
Print Speeds	Up-to 34PPM Letter/A4 or 19.5 / A3 /11" X 17"
1st Print Speed	13 seconds 1st print speed
Power Requirements	120 V 60 Hz, 230 V 50/60 Hz (market-specific)
Power Consumption	750 W
Dimensions	Height: 409 mm, Width: 561 mm, Depth: 521 mm, Weight: 28 kg

*CD Retrieve will run on Windows 98SE, Windows NT4 or Windows 2000. PowerFilm Software, Version 5.3 will run on Windows 2000, XP Professional and soon VISTA 32bit

The Reference Archive System

It's easy to implement a reference archive as part of your overall records management strategy. Improve your integrity and cost-effectiveness while providing continuous access. Ask your Authorized Reseller of KODAK Products to show you how.



Digital Products High-performance network computer peripherals.

Robust Digital Processing Load, store and retrieve digital documents with ease.

It's Analog Documents you can see! No technology required.

Trustworthy and Secure Documents held in a legally acceptable state. Accessible only when you need them to be.

For more information visit: www.kodak.com/go/docimaging

United Kingdom, Phone: +44 870 8502351, Fax: +44 870 850 2352
 Nordic, Phone: +46 (8) 555 638 31, Fax: +46 (8) 555 995 04
 Africa, Phone: +44 1442 846547, Fax: +44 1442 846606
 Germany, Austria and Switzerland, Phone: +49 711 406 2535, Fax: +49 711 406 3619
 Eastern Europe, Near and Middle East, Phone: +36 1 454 3031, Fax: +36 1 387 9113
 France, Spain and Portugal, Phone: +33 1 4001 4082, Fax: +33 1 4001 3981
 Italy, Phone: +39 0266028338, Fax: +39 0266028358
 The Netherlands, Phone: +31 33 2998751, Fax: +31 20 6545227
 Belgium and Luxembourg, Phone: +32 262 68506, Fax: +32 262 68502

Innovation you can count on™

© Kodak. 2008. Kodak is a trademark of Eastman Kodak Company. DoIdeMedien 056_08.
 CAT NO. E-DI.040.0608.en.01

InfoCAP

Kodak
 Service & Support

Kodak

The speed of digital.
 The power of analog.

Kodak
 2400DSV-E and 3000DSV-E
 Digital Scanner-Printers
 POWERFILM Application
 Software



Safeguard your critical data with a reference archive.

When you need trustworthy copies of records to validate transactions, satisfy litigation, or meet regulatory and audit requirements, will they be there? In a reference archive, your records are maintained in an analog format on ISO-standard micrographic media via traditional microfilm equipment and today's digital-to-film writing technology like the KODAK i9600 Series Writers.

Your microfilm has never been so versatile.

For managing documents and information, and for lowcost, low-risk reference archive storage, microfilm is the media of choice. With a KODAK 2400DSV-E or 3000DSV-E Digital Scanner-Printer, you can deliver documents in digital and paper formats - and do it fast. They make excellent upgrades from analog reader-printers or first-generation film scanners. And they bridge microfilm's proven performance with the flexibility of digital technology. Now, you can have the best of both worlds.

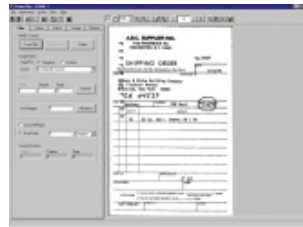
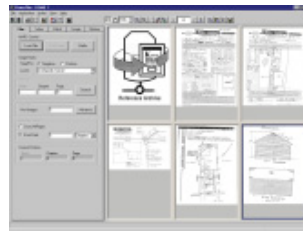
The KODAK 2400DSV-E Digital Scanner-Printer.

Designed for departmental use, the 2400DSV-E makes short work of on-demand printing or scanning. First, it scans images at the touch of a button. Then it lets you send images to either the optional high-speed video laser printer or a PC for local or network distribution.

The KODAK 3000DSV-E Digital Scanner-Printer.

If your application requires higher volumes and/or larger format documents, choose the 3000DSV-E Digital Scanner-Printer. Its generous 12x17 in. (303 x 440 mm) screen displays two 16 mm images or full-frame 35 mm film-roll or aperture cards, making it ideal for large-scale image conversions. Select from full, center, or split screen applications.

POWERFILM Application Software

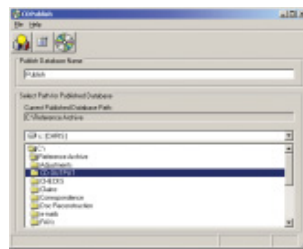


POWERFILM Application Software combines a user-friendly interface with a wide range of output, indexing, retrieval and distribution tools. It's specially designed for batch scanning and digitization of all film formats. What's more, it's also designed for document reconstruction, roll conversion, and CD creation using the included CD Publish/CD Retrieve application.

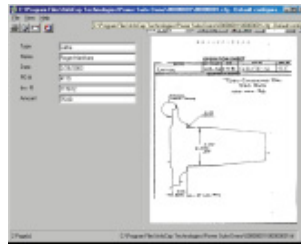
Here are just some of the ways it can make you more productive.

• Create CDs

Build a database of scanned images and data with CD Publish. Then use CD Retrieve to search and recall individual images, or groups of images, from indexing criteria that you choose.

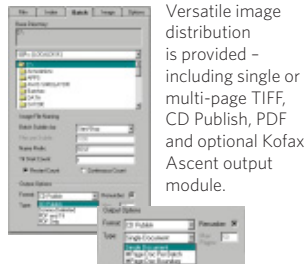


CD Publish



CD Retrieve

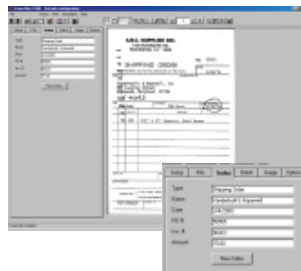
• Output Options



Versatile image distribution is provided - including single or multi-page TIFF, CD Publish, PDF and optional Kofax Ascent output module.

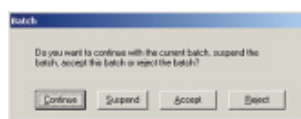
• Index Utility

Flexible indexing offers as many as 10 fields - text, numeric or date - with up to 32 characters per field. Auto-repeat indexing, such as "current date," is another efficiency feature that's included.



• Suspend Batch

This indispensable job management feature lets the operator interrupt a job, suspend the batch and resume work later. This adds greater versatility, productivity and flexibility for multiple conversion projects.



Productivity-enhancing accessories make a good thing even better.

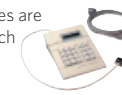
• **Print** "New" High-Speed 34PPM Video Laser Printer Option, delivers high-quality prints in as little as 13 seconds. One fixed paper tray holding 'up-to' 200 sheets plus one 500 sheet Universal Cassette for holding Letter/A4 or 11" X 17" /A3 paper sizes.

First print delivery:
Under 13 seconds from cold
Multiple prints:
34 PPM Letter/A4 continuous per minute
Print sizes:
Letter/A4/11" X 17"/A3
Paper supply:
200-sheet universal tray & 500 sheet universal cassette
Warm-up:
In under 60 seconds



• MARS Controllers

These keypad interfaces are used to configure search mode set-ups and to enter image address information for retrieval. MARS controllers are used with scanner-printer models that have been configured with 16 mm film carriers that search imagemarked film.



MARS 2



MARS IV

• **Lenses** Choose from five lenses - zoom and fixed - that enlarge images for viewing or scanning. Your lens selection is determined by the reduction ratio of images on the film to be used.



• **Film Carriers** We offer carriers for any need and any film format. The descriptions below will help you choose the carrier(s) right for your application.

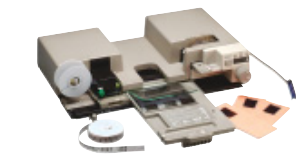


Cartridge Carrier 15 A

- 16 mm film in ANSI cartridges
- Typically used with image-marked film
- Automatic load
- Interface board included

Cartridge Carrier 15 M

- 16 mm film in 3M type cartridges
- Typically used with image-marked film
- Automatic load
- Interface board included



Universal Carrier UC2

- Semi-automatic load
- Odometer included
- Accepts
 - Open-reel 16 and 35 mm film
 - Fiche, jackets or aperture cards
- Interface board included



Fiche Carrier 5

- For manual use with fiche, jackets or aperture cards

2400DSV-E



Shown with manual masking kit installed



3000DSV-E

Designed for operator efficiency. Both digital scanner-printers have front panel controls within easy reach. Operators can switch from printing to scanning to PC at the touch of a button. High-resolution, anti-glare screens with adjustable brightness settings minimize eye fatigue.

Both models feature:

- PC and Video Printer Interface
 - Video printer cable and SCSI cable are included with mainframe
- Accepts all common carriers and your choice of two Intelligent Controllers for 16 mm image-marked film
- Prints to "New" Optional High-Speed 34PPM Video Laser Printer, delivering 11x17/letter/legal/A3/A4 size prints
 - Electronic Zooming control allows printing from 50-200%
- Image distortion correction
- Date and time printing on printed pages
- Automatic image rotation and skew correction are standard
- Choice of optional interchangeable zoom lenses
- Kodak installation
- Maximum productivity and efficiency through KODAK Service & Support worldwide
- Options available:
 - 256-level grayscale output to PC
 - Manual masking kit
 - POWERFILM Application Software